



CANADA
PROVINCE OF QUEBEC
COUNTY OF ARGENTEUIL
MUNICIPALITY OF THE TOWNSHIP OF GORE

BY-LAW NUMBER 243-02

**REGARDING THE CLOSURE OF CERTAIN
MUNICIPAL ROADS**

WHEREAS the Municipal Powers Act (C-47.1) allows the municipality to regulate access to public roadways;

WHEREAS the municipality considers it appropriate modify the status of certain public roads that have been closed in the past;

WHEREAS a notice of motion and the presentation of the present by-law was given by Councillor Daniel Leduc at the regular meeting of September 4, 2024;

WHEREAS a copy of the by-law was given to the members of council 72 hours prior to the meeting where this by-law is presented for adoption;

WHEREAS copies of the by-law were made available to the public at the beginning of the meeting;

WHEREAS the Mayor presented the by-law in accordance with article 445 of the Quebec Municipal Code(C-27.1).

CONSEQUENTLY,

IT IS MOVED BY: Councillor Daniel Leduc

SECONDED BY: Councillor Anik Korosec

AND RESOLVED unanimously by Councillors (6):

THAT the by-law be adopted as follows:

ARTICLE 1

The preamble forms an integral part of this by-law.

ARTICLE 2: ROAD CLOSURES

The roads described below are closed to traffic and removed from the municipality's maintenance program:

a) Rogers Road

The road is closed and unmaintained starting at kilometer 1.92 from its intersection with Cambria Road to kilometer 4.78, as shown on the plan in Annex A.



**RÈGLEMENTS DE LA
BY-LAWS OF THE** **Municipalité du Canton de Gore**

- b) McDonald Road**
The road is completely closed and unmaintained starting at kilometer 1.036 from its intersection with Route 329 to kilometer 4.27 as shown on the plan in Annex B.
- c) Street without a name Rue Sans nom, lots 5 082 425 à 5 082 426**
The street, belonging to the municipality, forming a half-moon shape east of Highway 329 and north of Solar Lake as shown on the plan in Annex C, is closed and unmaintained.
- d) Des Montagnes Road**
The road is closed and unmaintained starting at kilometer 0.185 from its intersection with Route 329 (at the east edge of the route) to Gregalach Road, as shown on the plan in Annex "D".
- e) Densa Road**
The road is closed and unmaintained starting at kilometer 0.6 from its intersection with Des Muguets Street to kilometer 1.9, as shown on the plan in Annex E.

ARTICLE 4: REPEALING AND REPLACEMENT OF BY-LAWS

This by-law repeals and replaces by-law 243 and 243-1 regarding the closure of certain municipal roads.

ARTICLE 4: COMMING INTO EFFECT

The present by-law comes into effect in accordance with the law.

Scott Pearce,
Mayor

Sarah Channell,
Clerk-Treasurer

NOTICE OF MOTION:	2024-09-04
PRESENTATION OF THE BY-LAW	2024-09-04
ADOPTION OF THE BY-LAW:	2024-10-07
PUBLICATION NOTICE:	2024-10-09
EFFECTIVE DATE:	2024-10-09



RÈGLEMENTS DE LA
BY-LAWS OF THE Municipalité du Canton de Gore

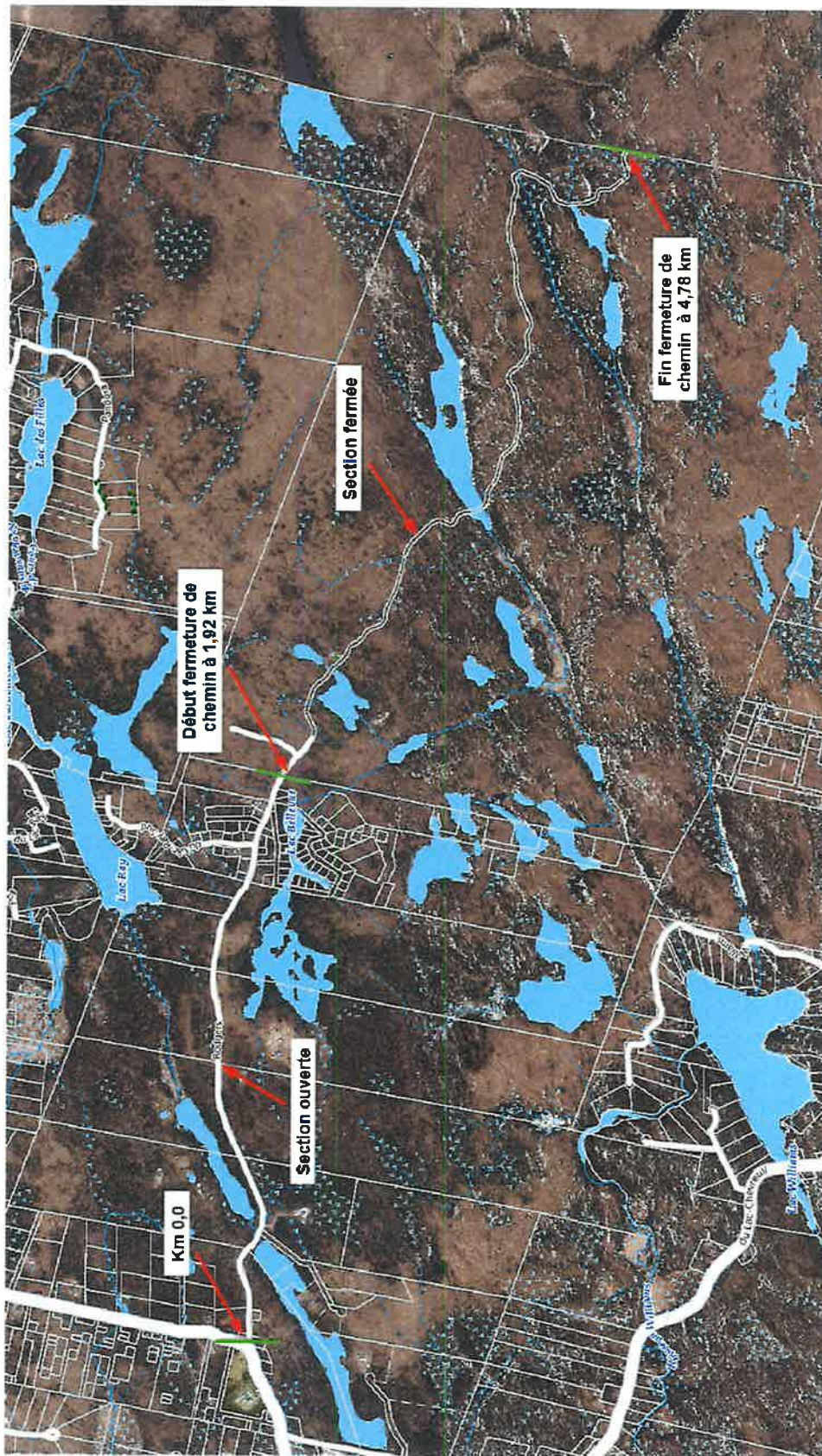
Annex A: Rogers Road

Section ouverte : Section that is open

Début fermeture de chemin : Beginning of the road closure

Section fermée : Closed section

Fin fermeture de chemin : End of Road closure

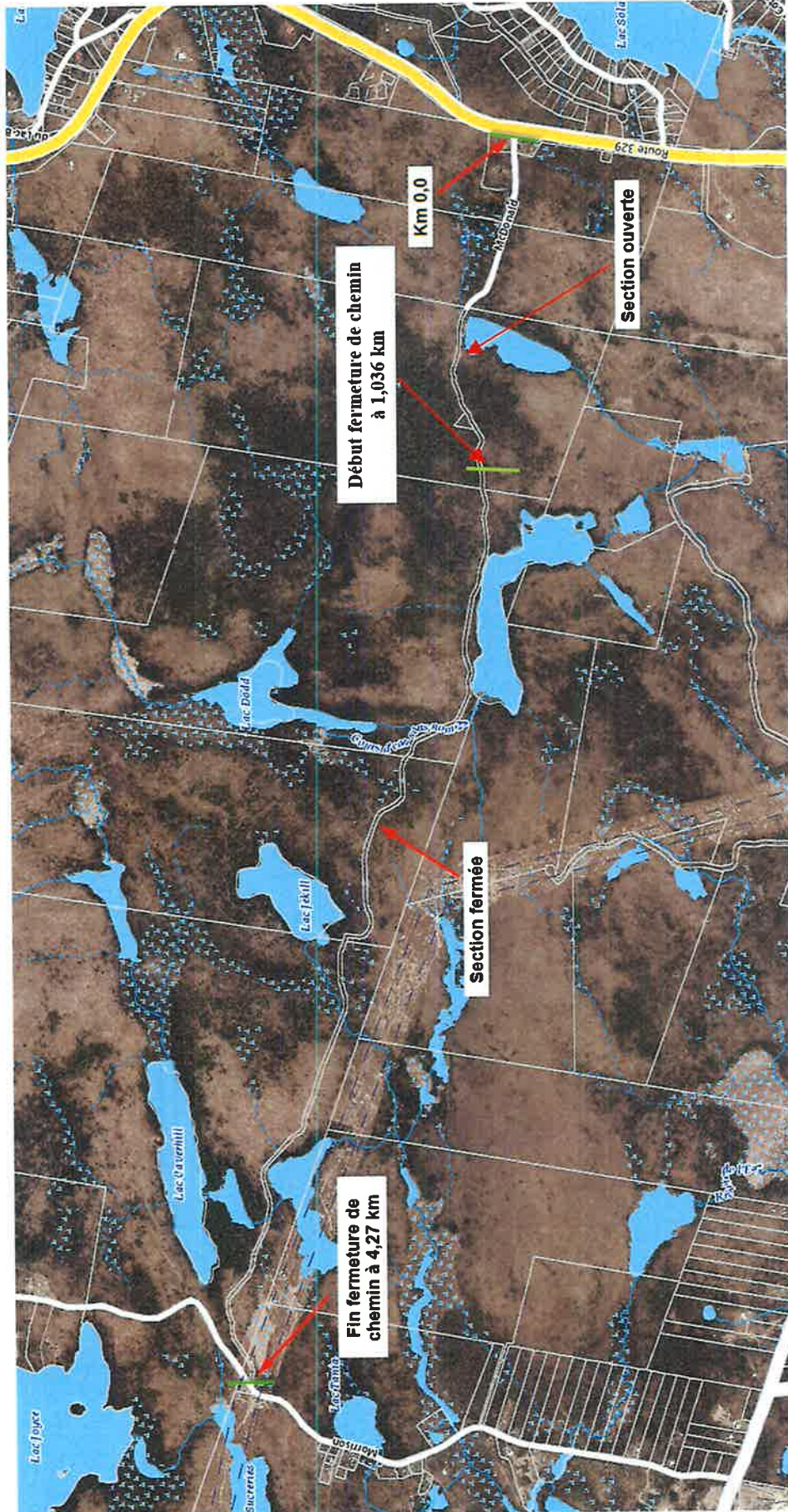




RÈGLEMENTS DE LA
BY-LAWS OF THE Municipalité du Canton de Gore

Annex B: McDonald Road

Section ouverte : Section that is open
Début fermeture de chemin : Beginning of the road closure
Section fermée : Closed section
Fin fermeture de chemin : End of Road closure





RÈGLEMENTS DE LA
BY-LAWS OF THE **Municipalité du Canton de Gore**

Annex C: Street without a name, lots 5 082 425 à 5 082 426

Section ouverte : Section that is open

Début fermeture de chemin : Beginning of the road closure

Section fermée : Closed section

Fin fermeture de Chemin : End of Road closure

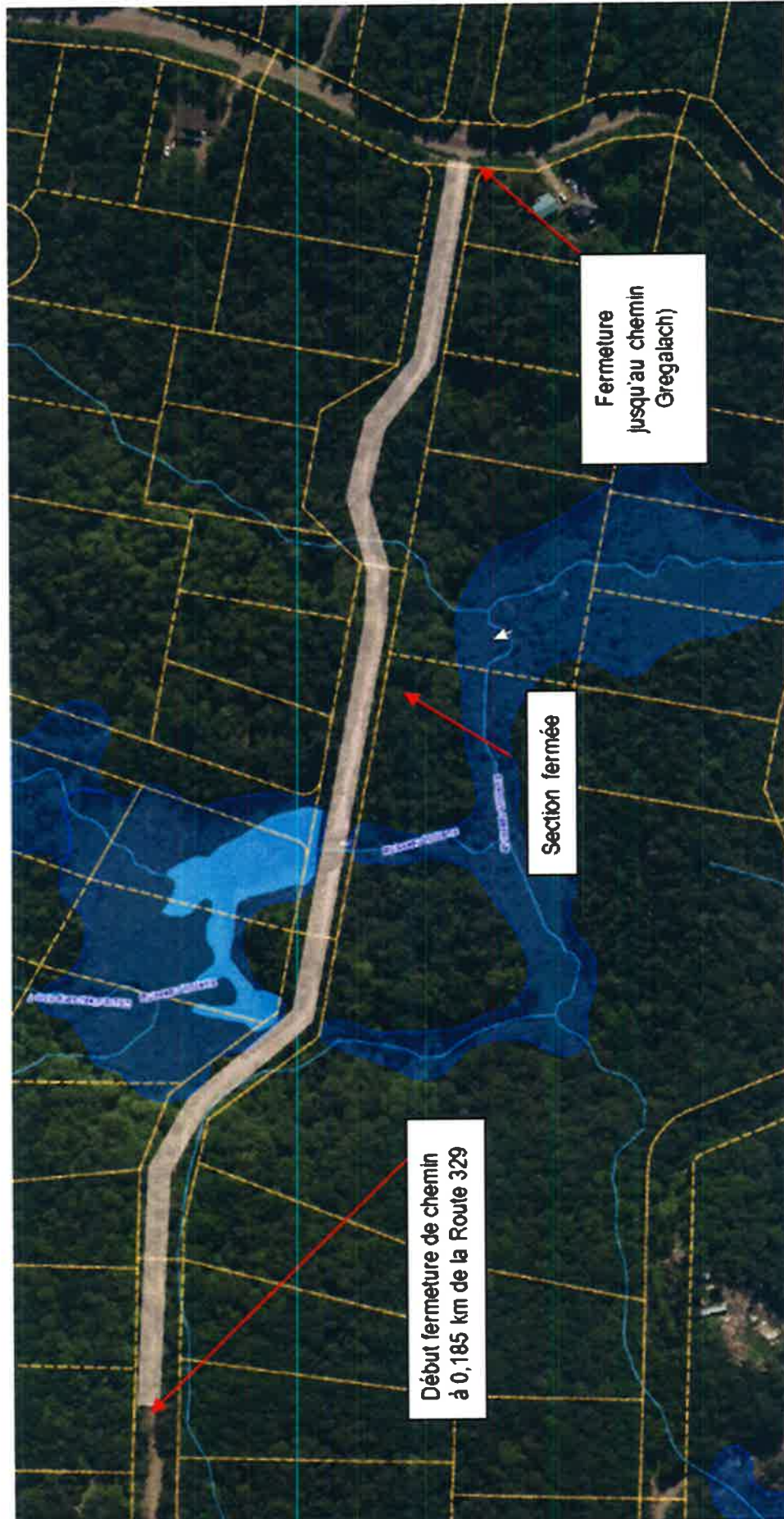




RÈGLEMENTS DE LA
BY-LAWS OF THE **Municipalité du Canton de Gore**

Annex D: Des Montagnes Street

Section ouverte : Section that is open
Début fermeture de chemin : Beginning of the road closure
Section fermée : Closed section
Fin fermeture de Chemin : End of Road closure





RÈGLEMENTS DE LA BY-LAWS OF THE Municipalité du Canton de Gore

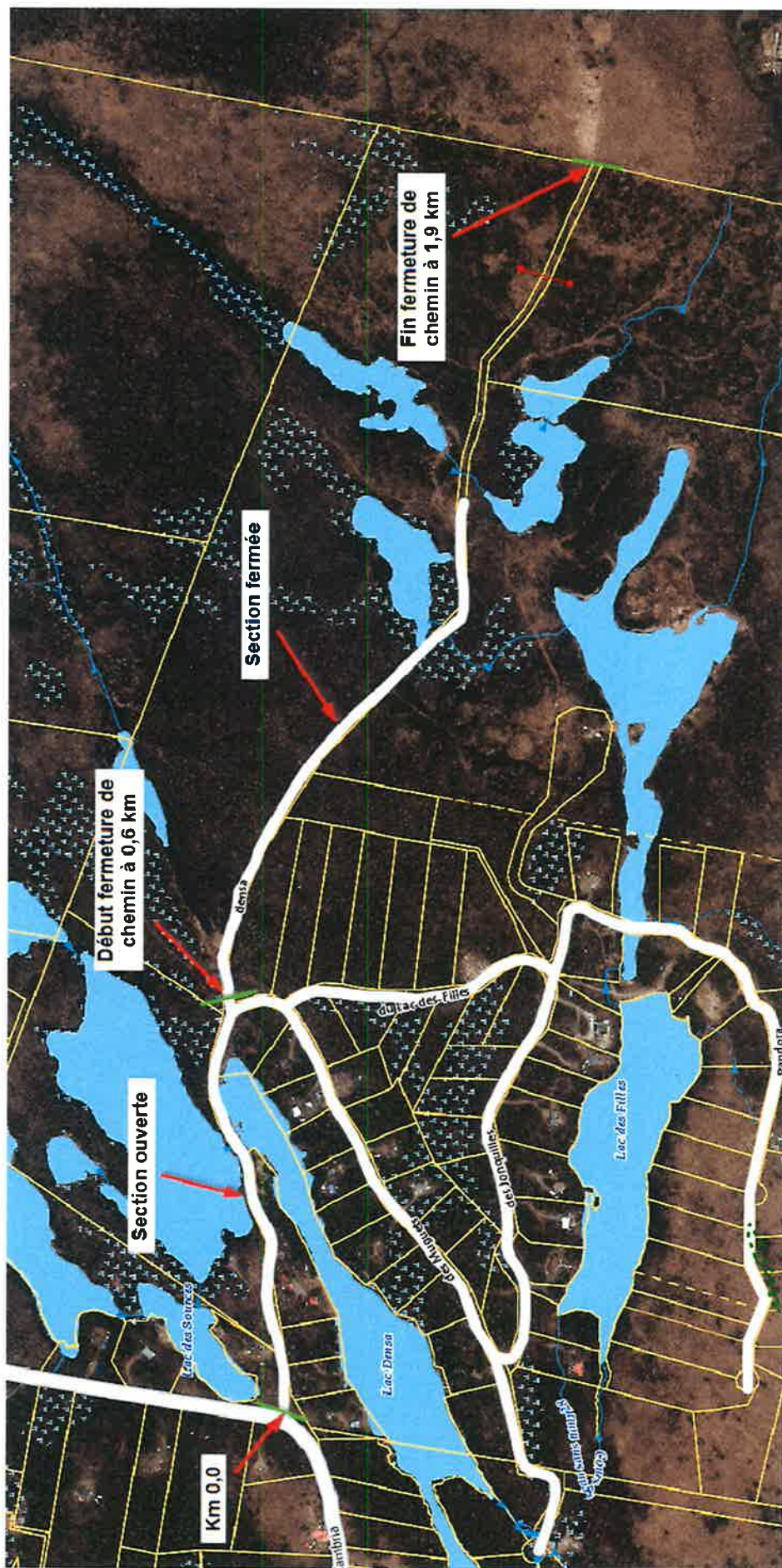
Annexe E: Densa Road

Section ouverte : Section that is open

Début fermeture de chemin : Beginning of the road closure

Section fermée : Closed section

Fin fermeture de Chemin : End of Road closure





RÈGLEMENTS DE LA
BY-LAWS OF THE **Municipalité du Canton de Gore**

[A large, diagonal blue line spans the page, with a stylized signature written across it in the middle.]